

GlobalLink DigitalSM

Boost efficiency and simplify workflows with GlobalLink Digital — an open platform for the next generation of financial services technology

GlobalLink Digital unifies the desktop environment enabling

- easy-to-deploy and customizable trading and workflow solutions
- interoperable architecture with access to liquidity, financing and asset intelligence
- best-in-class services including State Street's suite of trading applications as well as single sign on (SSO) to market-leading partners and clients' internal applications

Investment professionals face significant complexity in their day-to-day workflows. Beyond precious time lost swiveling between fragmented data, inefficiencies can lead to costly errors or missed opportunities. Closed architecture, operational challenges and high costs of integration prevent adoption of best-in-breed solutions.

Our industry faces challenges. Operating efficient front-end technology should not be one of them.

GlobalLink Digital unifies the desktop environment so that market participants can create and operate easy-to-deploy and customizable trading and workflow solutions. We offer clients a leading, interoperable architecture with access to liquidity, financing and asset intelligence.

Our open platform allows for best-in-class services including GlobalLink Digital and State Street's suite of trading applications as well as single sign on (SSO) to market-leading partners and clients' internal applications.

The GlobalLink suite has a 25+ year track record of building award-winning electronic trading platforms that increase transparency, improve trading efficiency and deliver quantifiable trade cost analysis. GlobalLink Digital, part of State Street's Digital suite of market-leading e-trading platforms, technology and workflow solutions, is a trusted and highly regulated partner with a long-standing leadership position in delivering innovative pre- and post-trade solutions.

Benefits



Work Smarter

Monitor key systems, receive alerts and take actions through a modern UX



Interoperate / Plug & Play

Enable local plug and play integration between apps using the open-source FDC3 standards



Deliver Faster

Build and optimize workflows based on the user journey, leveraging existing applications



Essential Partner

A trusted provider of financing and trading solutions, execution management, analytics, insights and indicators, post-trade settlement and proprietary liquidity



Connectivity

Access to more than 500 buy-side institutions, 200 sell-side institutions and 300 custodians

Product Overview

GlobalLink Digital enables low-code and no-code interoperability across the platform, State Street's suite of trading applications, trusted third-party applications and proprietary applications via SSO architecture.

Desktop interoperability means various applications from different providers can be securely integrated to enable a unified custom workflow that eliminates the need for repetitive operations. This empowers investment professionals to make faster, more-informed decisions.

User-Centric Design

Through an elevated user experience, GlobalLink Digital offers comprehensive solutions that lets clients and partners develop new, custom widgets and tiles, or integrate an existing native application. With the complex and evolving needs of investment professionals in mind, GlobalLink Digital helps users monitor activity, receive alerts and take action across

the trading and investment lifecycle.

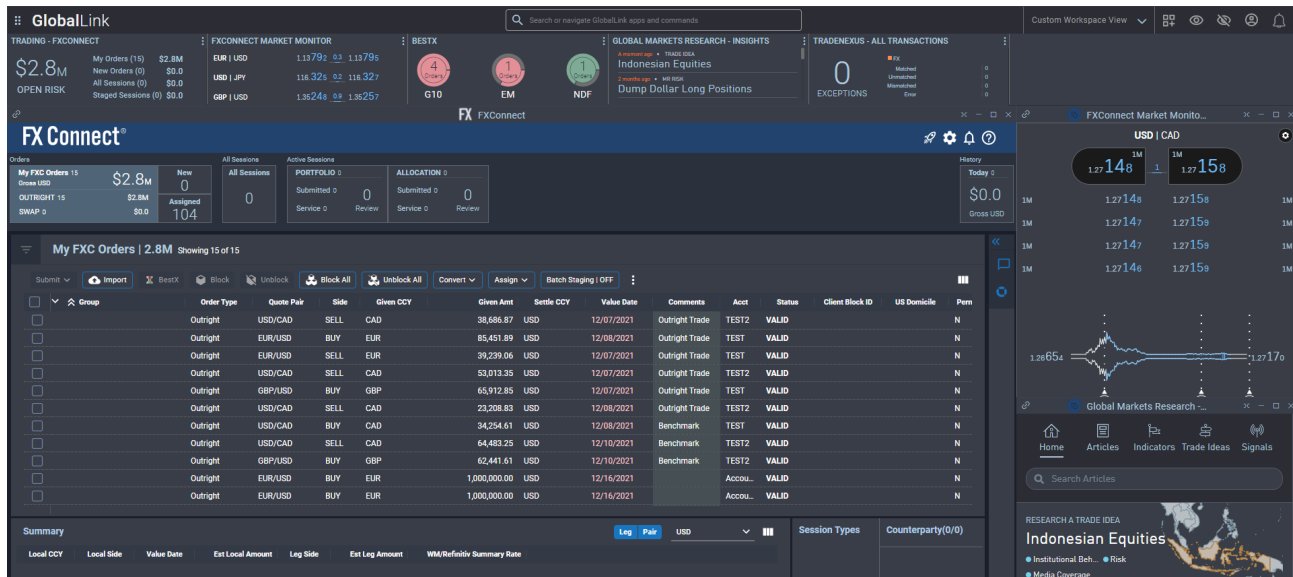
Added Value Systems

Workflow Efficiency

Using the integrated multi-asset platform, applications synchronize and work in harmony to boost efficiency across your trading platforms. Analytics woven throughout GlobalLink Digital provide vital insights into improving executions in your core competencies and the periphery of your businesses as well. Non-trading services can be equally as important to a money manager's workflow and State Street is uniquely positioned to offer research, compliance and post-trade settlement in addition to third-party solutions that align well with GlobalLink Digital's target market and strategy.

Infrastructure Cost Savings

Our scalable, intuitive single interface allows you to onboard new solutions for your users without heavy integration costs. You gain the flexibility to manage users, access funds, routing and messaging rules,



Interoperability

Communication between integrated applications (modern or legacy, in-house or third-party) will be provided through the Finsemble message bus, which runs on Electron and also adheres to FDC3 message standardization. Using our GlobalLink Digital platform, your trading systems will dynamically communicate with internal and external systems to optimize trade timing, venue selection and risk management all based on tailored metrics and data.

For middle-office users, our TradeNeXusSM, BestX[®] and other third-party operational platforms available through GlobalLink Digital will create efficiencies in what can often be one of the most fragmented parts of your business.

Front-to-Back Alignment

State Street AlphaSM is a fully integrated front-to-back platform that combines proven industry-leading components including Charles River Development, Alpha Data Platform, middle-office processing, and a comprehensive set of data and back-office services. Purpose-built as an open architecture solution, State Street Alpha supports interoperability with a rich and growing ecosystem of third-party liquidity, analytics, data and application providers.

GlobalLink Digital empowers portfolio managers, traders and risk teams to reduce noise and create efficiencies by customizing and unifying the client's desktop with State Street Alpha. GlobalLink Digital monitors, alerts and navigates a user to where their attention is needed most, aligning with State Street Alpha throughout the workflow.

Case Study



Challenge: A private equity fund that services clients' complex FX requirements around the globe had a combination of in-house and outsourced solutions. Operations were growing increasingly sophisticated while their existing technology was lagging. They also found it strenuous to maintain multiple systems for users.



Solution: The client approached us to support their requirement for trade execution, curated liquidity, workflow and research where all systems could communicate with each other. By integrating the client's in-house order management platform into GlobalLink Digital, we connected their trading system with FX Connect[®], State Street Associates Insights[®], TradeNeXus and BestX. The client gained access to our trade execution and workflow, world-class research, dynamic real-time trade reporting, and consistent oversight and management of trade executions and functions — all on one platform.

To learn more about GlobalLink Digital, contact:

Michael O'Malley
Head of GlobalLink Synergy
MO'Malley@statestreet.com

STATE STREET®

State Street Corporation
One Lincoln Street, Boston, MA 02111

www.statestreet.com

State Street DigitalSM and GlobalLink DigitalSM are the business names and registered marks of State Street Corporation® (collectively "State Street").

Depending upon several factors including, but not limited to, the product, access model and/or jurisdiction in which services are accessed, there may be one or more entities offering the product and services. Each offering entity is subject to varying degrees of oversight and regulation. The oversight and/or regulation of an offering entity engaging in certain activities should not be construed to mean that all products and services offered by such offering entity are subject to the same degree of oversight and/or regulation. Certain foreign exchange transactions, including spot and certain forward transactions, may not be subject to regulation in all jurisdictions. Details about the regulation of a particular offering entity are available upon request. Products and services may not be available in all jurisdictions.

This document is for marketing and/or informational purposes only; it does not take into account any investor's particular investment objectives, strategies or tax and legal status, nor does it purport to be comprehensive or intended to replace the exercise of a client's own careful independent judgement regarding any corresponding investment decision. This document and the information herein does not constitute investment, legal, or tax advice and is not a solicitation to buy or sell currencies, derivatives or any other financial products or services, nor is it intended to constitute any binding contractual arrangement or commitment by State Street to provide securities, foreign exchange, derivatives or any other services. The information provided herein has been obtained from sources believed to be reliable at the time of publication; nonetheless, we cannot guarantee nor do we make any representation or warranty as to its accuracy and you should not place any reliance on said information. State Street hereby disclaims all liability, whether arising in contract, tort or otherwise, for any losses, liabilities, damages, expenses or costs arising, either direct or consequential, from or in connection with the use of this document and/or the information herein.

This communication is provided by State Street Trust and Banking Co., Ltd. to customers in **Japan**. State Street Trust and Banking Co., Ltd. acts as liaison to assist communication between the Japanese

customers and affiliates overseas providing GlobalLink products and services. GlobalLink products and services are offered and provided by such overseas affiliates to customers in Japan and State Street Trust and Banking Co., Ltd. is not the contracting party to the GlobalLink products and services.

本書は、本邦のお客様に対して、ステート・ストリート信託銀行株式会社が提供するものです。ステート・ストリート信託銀行株式会社は、海外関連会社が本邦のお客様に提供するグローバルリンクのサービス・商品に関して、お客様と当該サービス・商品提供者との間の連絡・意思疎通のサポートを行います。グローバルリンクのサービス・商品は、海外関連会社により本邦のお客様に提供されるものであり、ステート・ストリート信託銀行株式会社は、当該サービス・商品に関してお客様との契約の主体となるものではありません。本書は、グローバルリンクのサービス・商品を紹介するために作成されたものであり、いかなる金融商品・サービスの勧誘を目的とするものではありません。

Subscribers should be aware of the risks of participating in trading foreign exchange or derivative instruments or in investments in non-liquid or emerging markets. Derivatives generally involve leverage and are therefore more volatile than their underlying cash investments. Subscribers should be aware that products and services outlined herein may put their capital at risk. Further, past performance is no guarantee of future results and, where applicable, returns may increase or decrease as a result of currency fluctuations.

This communication is not intended for retail clients, nor for distribution to, and may not be relied upon by, any person or entity in any jurisdiction or country where such distribution or use would be contrary to applicable law or regulation. This publication or any portion hereof may not be reprinted, sold or redistributed without the prior written consent of State Street. GL GLD 2022-05

To learn how State Street looks after your personal data, visit:
<https://www.statestreet.com/utility/privacy-notice.html>.

© 2023 State Street Corporation - All Rights Reserved
5410437.1.1.GBL
Expiration Date: 1/23/2024